



OT400 BARIATRIC CEILING HOIST

A BARIATRIC CEILING HOIST THAT REALLY TAKES THE STRAIN



THE OT400 BARIATRIC CEILING HOIST IS A ROBUST PATIENT HOIST DESIGNED TO SAVE TIME & CARERS NEEDED TO TRANSFER BARIATRIC PATIENTS.

The OT400 Bariatric Ceiling Hoist saves transfer time, provides dignity, offers better positioning and reduces the number of carers needed to transfer users up to 400kg. As a flexible solution with a number of configurations, the OT400 Bariatric Ceiling Hoist offers a robust and built to last option that will continue to perform.

REINFORCED DESIGN



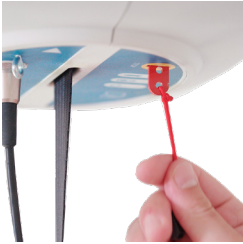
The OT400 Bariatric Ceiling Hoist is designed to offer a reinforced and strong choice for hoisting bariatric patients. Built with hard wearing steel gears, a two belt support and a number of additional strengthening features, the OT400 will help reduce the number of carers needed to reposition and transfer patients up to 400kg.

HYBRID CHARGING



The dynamo gravity-powered charging feature provides substantially more charge than a normal charging unit. This allows the OT400 to support well over 150 lifts before needing to be returned to charge, providing carers and users with reliable and dependable equipment that is also kinder to the environment.

NO TOOLS EMERGENCY LOWER



The OT400 Bariatric Ceiling Hoist requires no tools (Allen keys or screws) to activate the emergency lowering system. With a simple pull cord, the OT400 can be stopped in an instant then allowing the user can to be safely lowered.

BUILT TO LAST



The OT400 Bariatric Ceiling Hoist is designed to continue performing in a multi-use environment.

A true workhorse, the OT400 is built with steel gears to ensure that time-after-time, it will continue to support both users and carers.

NO LIGHTS AT NIGHT



Often used in a bedroom for nursing homes, hospitals or domestic homes, the OT400 Bariatric Ceiling Hoist features our 'no lights at night' system that when on charge ensures there are no annoying lights to keep the user awake.

EASY TO MAINTAIN



The OT400 Bariatric Ceiling Hoist is designed to be 'easy to maintain' ensuring that upon a service or inspection, all but the wheels can be serviced on the rail. This removes the need to dismantle the tracking system on every call out.

SELF BALANCING



From self-balancing cradles to loop spreader bars, the OT400 Bariatric Ceiling Hoist can support a variety of needs and requirements. Whichever you choose, all our spreader bars are designed to help the body maintain a natural position during transfer.

DESIGNED TO SUPPORT



SPECIFICATIONS

MODEL	OT400 Bariatric Ceiling Hoist
FUNCTION	Bariatric Patient Lifting, Room-to-Room Transfer, Ideal for Bathrooms, Bedrooms and Repositioning.
DIMENSIONS	Cassette - 303mm x 240mm x 190mm
WEIGHT CAPACITY	400kg
OPTIONS	6-Point Powered Tilting Cradle, 4-Point X Spreader Bar, Weigh Scale, Infra-Red Remote
TRACK OPTIONS	H-System, Turntable, Magnetic Gate, 90° Curve, 45° Curve, Room-to-Room, Free-standing Gantry
TRACK LENGTHS	2m, 3m, 4.5m, 6m, 8m
VOLTAGE	24Vdc
IP RATING	IP rating 54
APPLICATION	Nursing Home, Hospital, Domestic, School, Leisure Centre, Physiotherapy, Changing Places

DIMENSIONS

