



OT200 COMPACT CEILING HOIST

A CEILING HOIST LIKE NO OTHER



THE OT200 COMPACT CEILING HOIST IS A UNIQUE PATIENT HOIST DESIGNED TO SUPPORT & TRANSFER WHILST REDUCING RISK OF INJURY TO THE CARER.

The OT200 Compact Ceiling Hoist is a cost-effective, flexible solution available in a number of configurations that includes a wide assortment of track and accessories ensuring install into virtually any setting. With a range of unique features our best-selling OT200 Compact Ceiling Hoist provides a bespoke option that will continue to perform.

COMPACT DESIGN



The OT200 is designed to offer a modern and attractive option for hoisting. The OT200 is one of the smallest fixed ceiling hoists on the market, giving a subtle and non-obtrusive installation. The OT200 Ceiling Hoist has been widely used as the preferred method for transfer in multiple rooms such as bedrooms, assisted bathrooms, pools and living areas.

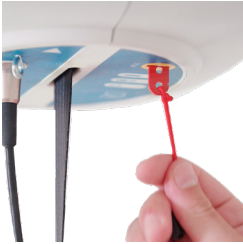
HYBRID CHARGING



The dynamo gravity-powered charging feature provides substantially more charge than a normal charging unit. This allows the OT200 to support well over 150 lifts before needing to be returned to charge, providing carers and users with reliable and dependable equipment that is also kinder to the environment.

DESIGNED TO SUPPORT

NO TOOLS EMERGENCY LOWER



The OT200 Compact Ceiling Hoist requires no tools (Allen keys or screws) to activate the emergency lowering system. With a simple pull cord, the OT200 can be stopped in an instant then allowing the user can to be safely lowered.

BUILT TO LAST



The OT200 Compact Ceiling Hoist is designed to continue performing in a multi-use environment.

A true workhorse, the OT200 is built with steel gears to ensure that time-after-time, it will continue to support both users and carers.

NO LIGHTS AT NIGHT



Often used in a bedroom for nursing homes, hospitals or domestic homes, the OT200 Compact Ceiling Hoist features our 'no lights at night' system that when on charge ensures there are no annoying lights to keep the user awake.

EASY TO MAINTAIN



The OT200 Compact Ceiling Hoist is designed to be 'easy to maintain' ensuring that upon a service or inspection, all but the wheels can be serviced on the rail. This removes the need to dismantle the tracking system on every call out.

SELF BALANCING



From self-balancing cradles to loop spreader bars, the OT200 Compact Ceiling Hoist can support a variety of needs and requirements. Whichever you choose, all our spreader bars are designed to help the body maintain a natural position during transfer.



SPECIFICATIONS

MODEL	OT200 Compact Ceiling Hoist
FUNCTION	Patient Lifting, Rehabilitation, Room-to-Room Transfer. Ideal for multi-use environments.
DIMENSIONS	Cassette - 303mm x 240mm x 190mm
WEIGHT CAPACITY	200kg or 250kg
PRODUCT WEIGHT	18kg
OPTIONS	4-Point Powered or Manual Tilting Cradle, 2-Point Spreader Bar (Standard), Weigh Scale, Infra-Red Remote
TRACK OPTIONS	H-System, Turntable, Magnetic Gate, 90° Curve, 45° Curve, Room-to-Room, Free-standing Gantry
TRACK LENGTHS	2m, 3m, 4.5m, 6m, 8m
VOLTAGE	24Vdc
LIFTING SPEED	2.5m min / max
TRAVEL SPEED	12m min / max
IP RATING	IP rating 54
NOISE	42dB (A)
APPLICATION	Nursing Home, Hospital, Domestic, School, Leisure Centre, Physiotherapy, Changing Places

DIMENSIONS

