



 **Dreamline**
CUSHIONS



DREAMLINE STX CUSHION

The Dreamline STX Cushion is a fully adjustable cushion with full height contouring, designed for inactive users who have asymmetrical positioning requirements and high pressure management needs. The STX Cushion provides the end user the highest amount of adjustability without compromise.

- A closed cell foam base for maximum stability with adjustable components
- Sunmate visco-elastic foam overlay
- 4-way stretch water-resistant incontinence cover
- Outer breathable moisture wicking cover
- Includes a set of 10 BAC pads for pelvic obliquity
- 80mm high contouring
- Adjustable foam / gel cluster packs



TECHNICAL

- Max user weight – 140kg
- EVA closed cell foam and urethane foam / gel inner (no latex)
- Modifications available

Weight Redistribution

Stability

Position Options

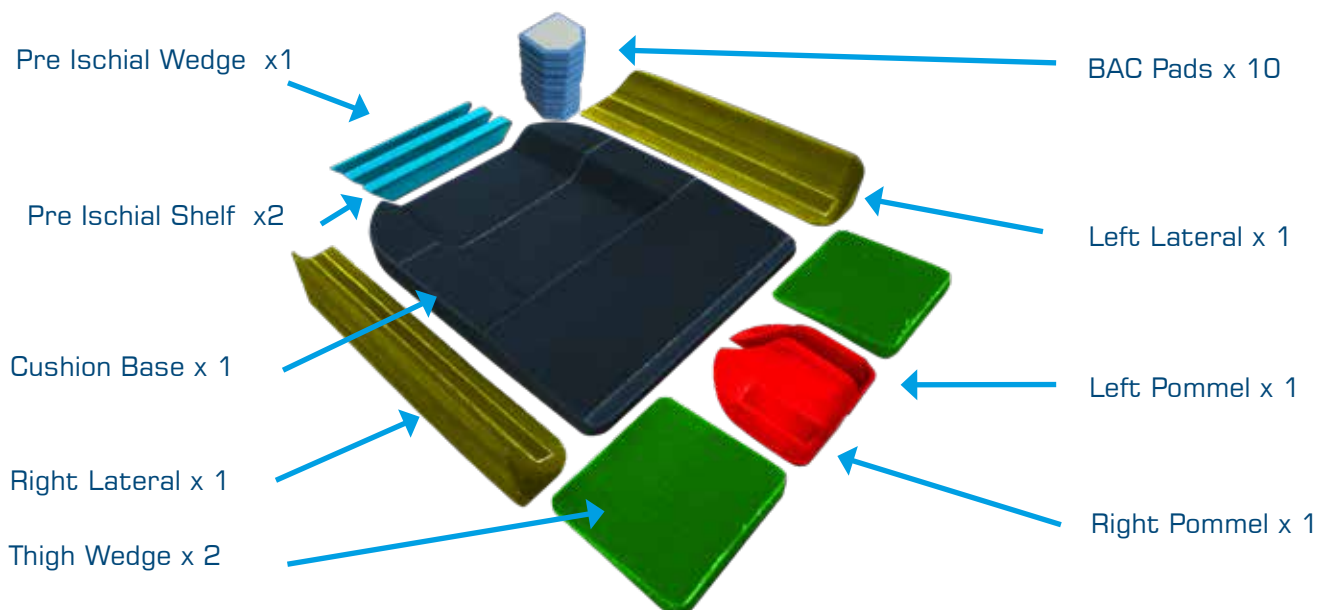


SIZE OPTIONS (IN INCHES)

12 X 12	12 X 14	14 X 14	14 X 16	14 X 18	16 X 16
16 X 18	16 X 20	18 X 18	18 X 20	18 X 22	20 X 20

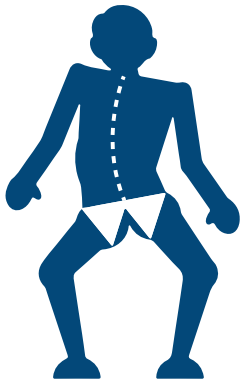
Custom sizes available

STANDARD POSITIONING COMPONENTS OF THE STX CUSHION



DREAMLINE STX CUSHION POSITIONING

PELVIC OBLIQUITY



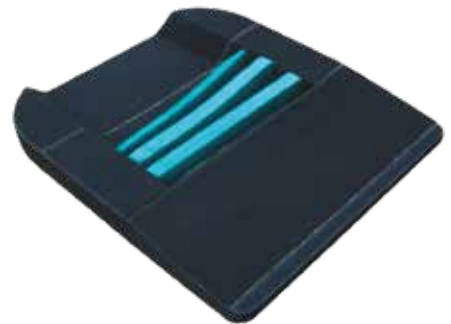
Use the stack of 10 BAC pads to correct/ accommodate pelvic obliquity. Pads can be layered for higher build requirements.



PELVIC ROTATION



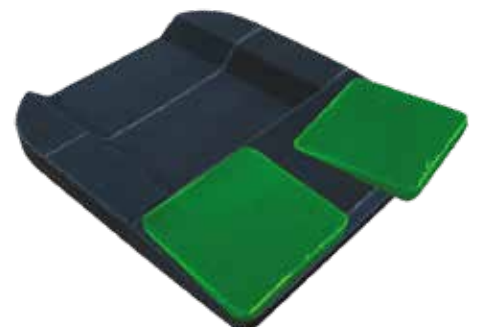
The pre-ischial pads may be spaced out, angled, flexed into a curved shape or removed to create the exact space for the pelvis.



LEG LENGTH DISCREPANCY

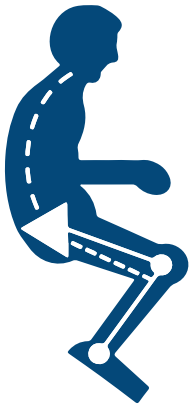


Thigh wedges may be used to accommodate a leg length discrepancy and an abducted or adducted sitting position.

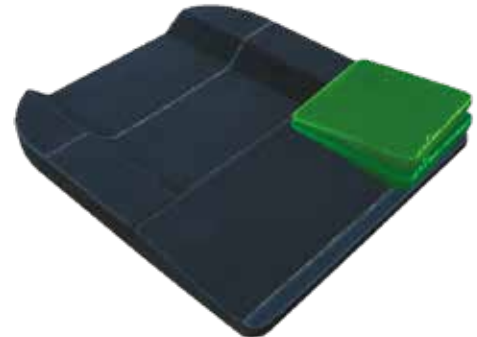


DREAMLINE STX CUSHION POSITIONING

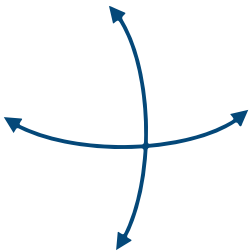
TIGHT HAMSTRINGS



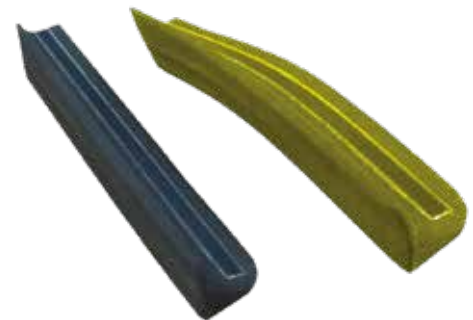
Thigh wedges are able to be removed or layered to achieve different angles of lift, raising and lowering each femur individually. This is particularly useful for tight hamstrings.



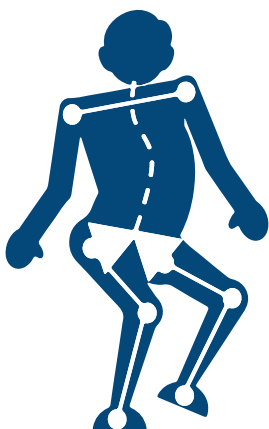
LATERALS FLEXED



The laterals may be flexed into shape to accurately follow the contours from the pelvis to the knee. This enables a smooth, unbroken surface along the leg for improved weight distribution.



POMMEL ASYMMETRICAL SET-UP

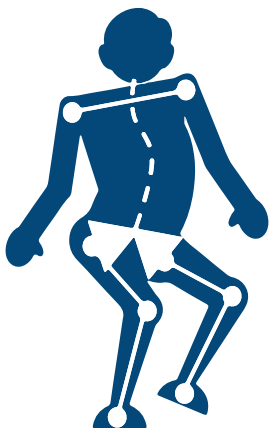


The pommel is divided into 2 halves so the exact desired position of each femur is achieved. The pommel is firm for accurate long-term positioning.

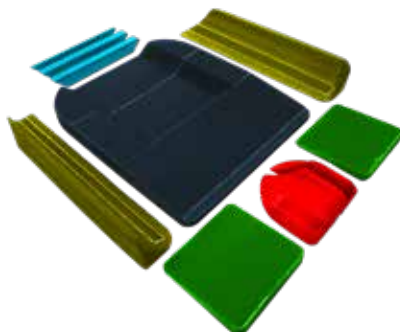


DREAMLINE STX CUSHION POSITIONING

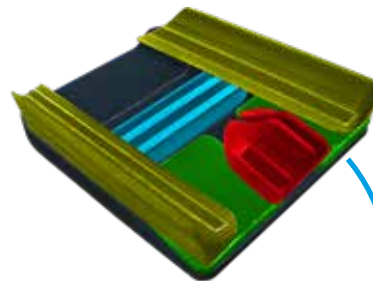
FULL ASYMMETRICAL SET-UP



1. COMPONENTS



2. SYMMETRICAL



3. ASYMMETRICAL

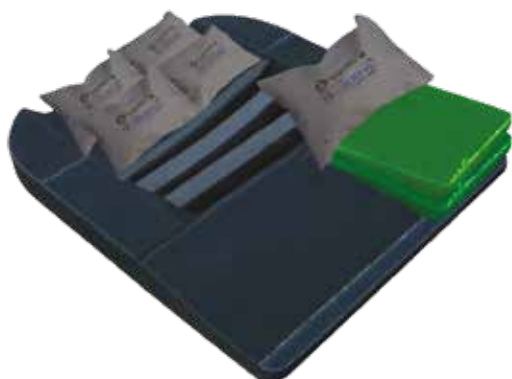


With surfaces covered in hook and loop (Velcro), accurate asymmetrical positions are easily achieved providing a stable base for each.

When building the base for the end user, allow extra room around the body for the comfort wrap to be placed over top.

CLUSTER PACKS AS SHAPERS AND FILLER

Use extra cluster packs (gel or foam) to create more shapes and fill cavities if required.



EXTRA LATERAL SEGMENTS

Extra lateral segments are able to be purchased separately to further customise the seat base to the end user.



CUSHION ACCESSORIES



OUTER COVER



INCONTINENCE COVER



EXTRA POSITIONING PADS



CUSHION GEL WRAP



STX LATERALS



STX PRE-ISCIAL SHELF



STX PRE-ISCIAL WEDGE



STX THIGH WEDGE



STX POMMEL LEFT / RIGHT



STX LATERAL SEGMENTS
2" / 3" / 4"



STX BAC PADS



STX FOAM CLUSTER PACK



STX GEL CLUSTER PACK

CUSHION MODIFICATIONS

Leg length discrepancy cut-outs	Custom height in-built lateral contouring
Extra thickness for heavy user	Remove lateral contouring
Channel cut-outs for drop base	Custom height in-built pommel
Taper cut for abduction sitting e.g hip spica	Remove pommel contouring
Custom fabric selection	