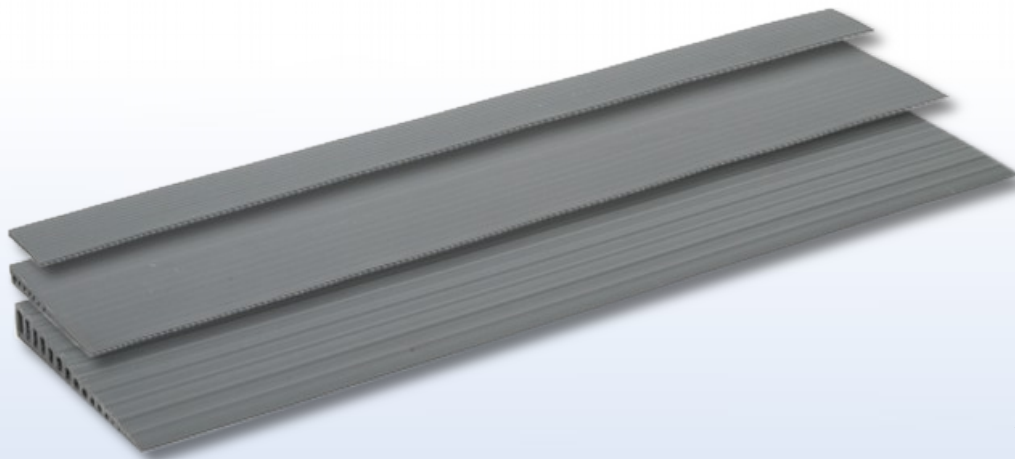
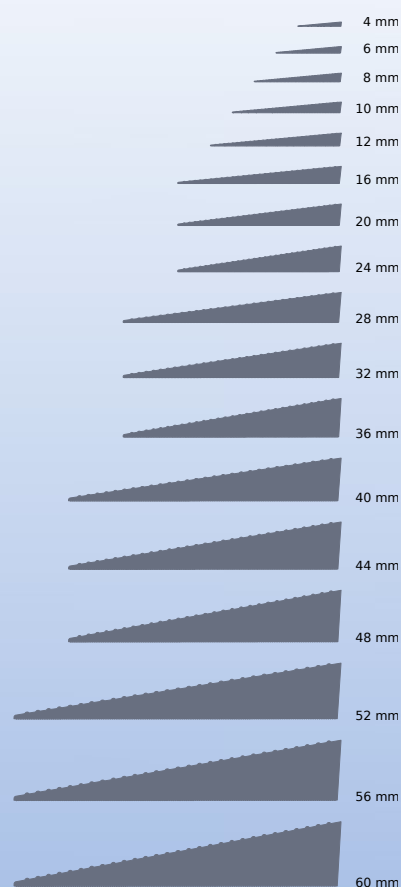


Doorstep ramps made of rubber

Rubber ramps with non-slip surface for example for use in bathrooms or outdoors. The ramps are made of rubber (TPE), they are PVC free and have an adhesive backing, but are also available without adhesive film. After removing the protective film, the ramp is ready for assembly right away. The ramps can easily be customized in width with a cutter or with the jigsaw blade (LX4) available as an accessory.



The ramps are available in the following sizes:
4, 6, 8, 10, 12, 16, 20, 24, 28, 32, 36, 40, 44, 48, 52, 56 and 60 mm



LX1a. Function of the rubber ramp



LX1b. Rubber ramp in detail

Accessories for rubber ramps



LX4. Jigsaw blade to cut the rubber ramps



LX5. Double adhesive tape, 50 meter



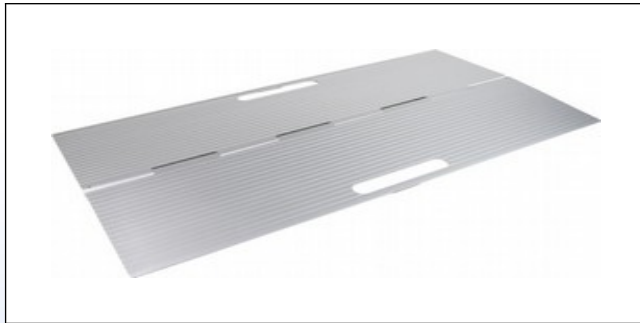
LX6. Degreaser for glue removal



LX7. Fixating set for rubber ramps

Doorstep ramps and door rails made of aluminium

The **DS4076** and **DS4025** are folding threshold ramps made of aluminium with an anti-slip surface. The ramps have 2 milled handles and are equipped with a longitudinally running hinge for folding.



LX8a. DS4076 folding threshold ramp made from aluminium



LX8b. DS4025 threshold ramp - set of 2 hinged parts including a carrying bag

Technical data	DS4076	DS4025
Dimensions (L x W)	40 cm x 76 cm	40 cm x 25 cm (x 2)
Weight	3,3 kg	2 kg (as pair)
Max. load	350 kg	350 kg

The **DS2176** is a mobile height adjustable threshold ramp in aluminium with an anti-slip surface. The 3 supplied feet are adjustable in height from 3 to 7 cm.



LX9a. DS2176 threshold ramp made from aluminium



LX9b. Feets for the height adjustment of the DS2176 ramp

Technical data	DS2176
Dimensions (L x W)	21 x 76 cm
Weight	1,55 kg
Max. load	350 kg

Door rails made of aluminium

Made from champagne or silver anodized aluminium.

Door rails can be fitted to close the gap when the doorstep is removed.

Available in 3 sizes : 125 mm, 150 mm, 175 mm



LX10. Door rail made from anodized aluminium

