



Solutions for Transfer and Care

Changing Places Toilets

BS8300:2018 - DESIGN AND APPROACH TO INSTALLING CHANGING PLACES



MMS MEDICAL LTD

51 Eastgate Drive Little Island

Cork, Ireland

Tel 021 4618000

Email: info@mmsmedical.ie

www.mmsmedical.ie/changingplaces



Contents

Introduction	1
What are Changing Places toilets?	3
Why do we need Changing Places?	3
Who are we?	4
Planning	5
The Business Case	7
Specifications and Product Recommendations	9
Example Designs and Layout Recommendations	11
Testimonial	16
Summary	17





Changing Places Toilets

BS8300:2018 - DESIGN AND APPROACH TO INSTALLING CHANGING PLACES

Introduction

Changing Places are life changing facilities for 600,000 people in Ireland with profound and multiple disabilities who are unable to use a standard WC or accessible toilet. Changing Places toilets are designed to support the disabled community and provide access to public toilet facilities that meet more complex needs. Without these vital facilities, carers are forced to change loved ones on the floor or be confined to their own homes.

This short e-book guide is designed to give an insight into the correct room layout of a 12m² Changing Places toilet facility, how to maximise the space and the equipment required. Although spaces can vary in shape and size, the equipment required remains the same, and this guide demonstrates the layout of a typical 4m by 3m room.

To find out more about exactly why Changing Places are so important, or how they help to transform lives, there are a number of resources available on the [OpeMed](#) and [MMS Medical websites](#) as well as on the official [Changing Places website](#) www.changingplaces.ie



There are around
600,000
disabled people in the Ireland.



**13.5% of
Ireland's
population**

**195,000
carers in Ireland**



What are Changing Places toilets?

These facilities provide more than the standard 'Doc M' disabled toilets. Offering more space and additional equipment, Changing Places toilets ensure people with disabilities can relieve themselves with dignity; whilst also providing room for a powered wheelchair or multiple carers. An overview of the equipment expected in these facilities include:

- Full room covering Ceiling Hoist systems
- Height adjustable Changing Benches
- Showering facilities (optional)
- Peninsular toilets
- Privacy screen



Bristol Cycling Centre
Changing Places Open Day

Why do we need Changing Places?

13.5% of the Irish population has a disability and ensuring we provide suitable toilet facilities are vital to help create equality in our society. Many make the conscious decision not to visit somewhere if they feel they do not have a clean, suitable environment to toilet.

Without these facilities people with disabilities and their families cannot take part in activities that most take for granted.



Changing Places at Welcome
Break South Mimms [M25]
Service Station

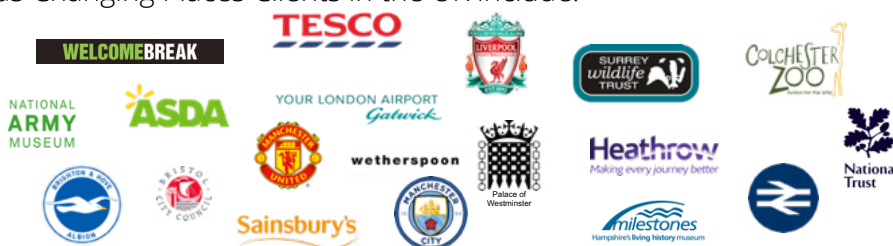


Who are we?

Providing publicly available Changing Places in locations such as museums, universities, airports and shopping centres offers a vital life-line to carers and those with disabilities. Our partner OpeMed is an official co-sponsor of the Changing Places Campaign in the UK. Working under the brand Aveso, OpeMed manufactures equipment and offers technical expertise for builders and architects to ensure these crucial facilities are available for everyone, offering the disabled community confidence to travel and visit new areas of interest.

In Ireland, OpeMed partners with MMS Medical Ltd. The MMS team of Changing Places experts are able to support and guide our customers helping them to achieve a facility that both meets their needs and that of the BS8300:2018. With a range of products available, we pride ourselves on offering a full turn-key solution providing you with one supplier for all the required products.

Some of OpeMed's Changing Places Clients in the UK include:



Our team of Product Specialists are always on hand to help and **discuss your projects.**

Planning

A Changing Places toilet facility aims to meet the needs of people who require extra care and assistance, and should be provided in addition to accessible WC and baby changing facilities. They include specialist equipment and trips out away from the home are often planned around there being a Changing Places toilet available, so clearly, careful planning and consideration to the most appropriate equipment, room space and layout should be given.

Often, research is carried out by the organisation considering incorporating a Changing Places in order to determine the demand and key user groups. Local campaigners and users can be a great source of information and their needs should be considered at all stages of the project.

Speaking with local occupational therapists, day centres, social services adult care teams, access consultants, and disabled people's groups are good places to start discussions.

It's also important to take professional advice at an early stage regardless of whether there is an existing space available or the project is to be part of a new development. Architects and building surveyors will be able to provide advice on the structural requirements and, due to the specialist nature of Changing Places, advice from experts in assisted care and patient handling equipment is crucial. These organisations will be able to provide quotations for cost of the specialist equipment as well as give detailed documentation for the pre installation requirements. This will include information about and wall or ceiling reinforcement work, electrical specifications and any other technical requirements.

Many specialist care manufacturers and organisations offer



Shopping Centre
Changing Places



Changing Places Signage

site assessments and surveys. These are very important to discuss the full cost and requirements of a Changing Places and should be followed up with detailed drawings for the room layout.



The Business Case

We know that sometimes in business you need to justify your investment spend to your superiors. Or maybe you are just looking to find out some more details about the Changing Places campaign. To help provide some facts and information we have put together three reasons why installing a Changing Places can be good for your business:

1) A Changing Places toilet unlocks a new customer base and accompanying revenue:

CASE STUDY UK:

SANDCASTLE WATER PARK, BLACKPOOL



Sandcastle Water Park have seen a **90%** increase of guests with disabilities as a result of installing a Changing Places toilet facility in June 2013.



£100,000 in revenue has been generated at Sandcastle Water Park since the launch of their Changing Places toilet facility.



Since embarking on a journey to increase accessibility, Sandcastle Water Park in Blackpool saw the number of disabled visitors increase by **115%**



Sandcastle Waterpark
Changing Places - Winner of
the Peoples Choice Changing
Places Award 2015



Sandcastle Waterpark
Changing Places - Winner of
the Peoples Choice Changing
Places Award 2015

2) Changing Places is a facility that is vital to the disabled community. Users LOVE sharing testimonials and will be a great source off positive press for your business.

// Very impressed with the changing places at South Mimms services!!! //



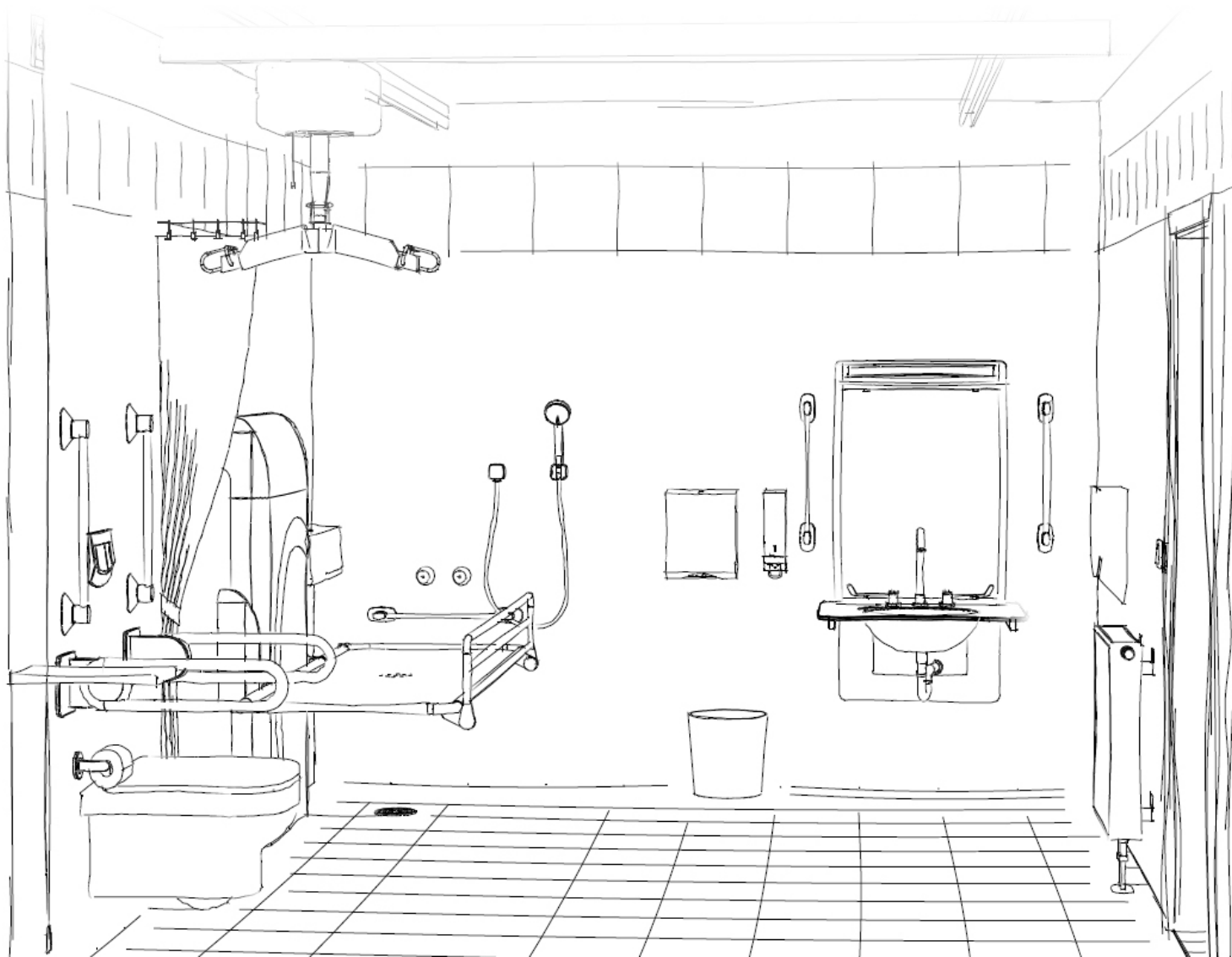
// Big shout out to South Mimms service station. Made our stop on a very long journey so much easier. It is our first time using a proper changing place, and it really makes a huge difference, especially with the large amount of coat hooks!! //

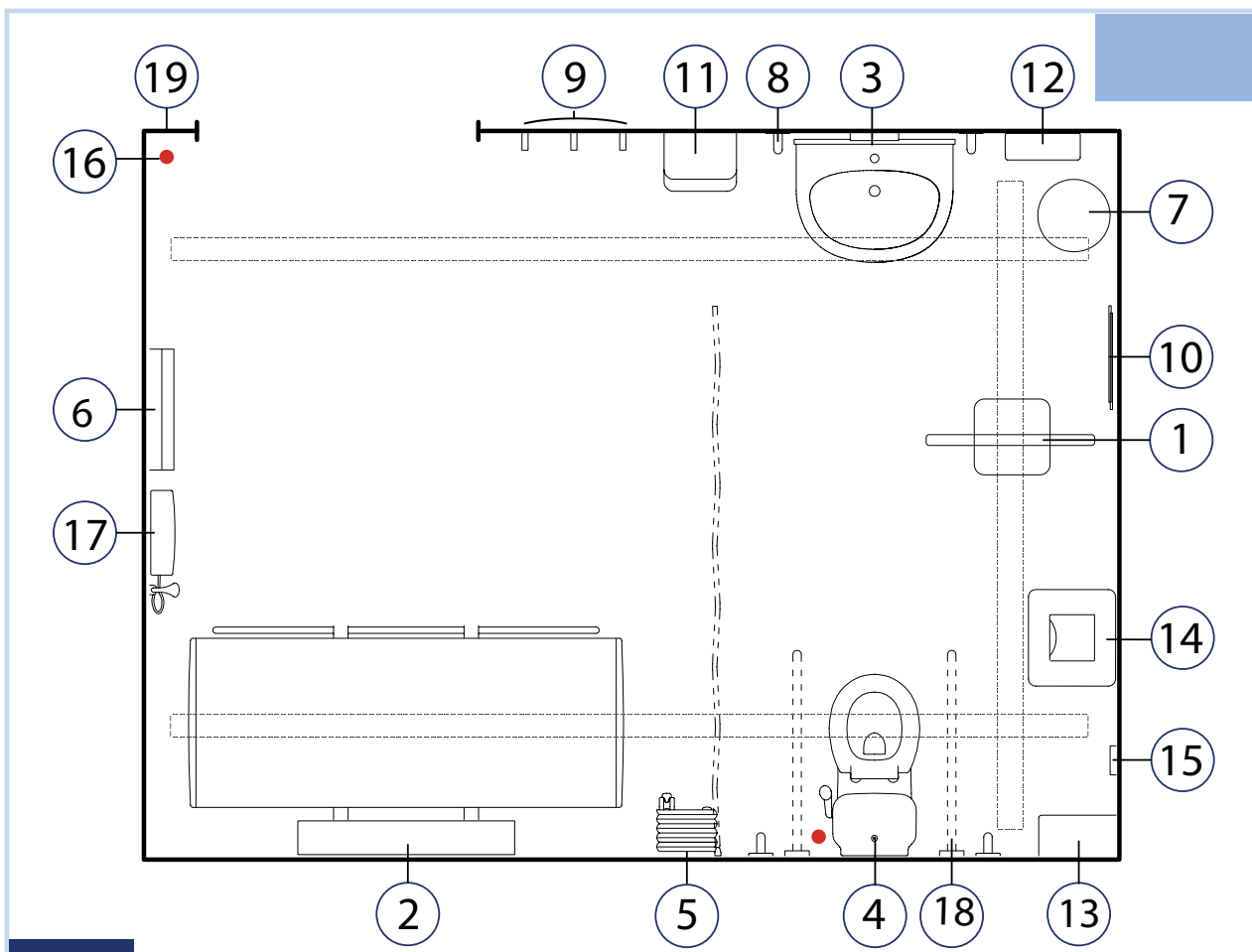
3) Having a Changing Places toilet is an ideal giveback to your community that will both benefit you and your customers.

Public toilets hold **77,000** germs and viruses
Yet those who require adult changing facilities have to get changed on the floor.

83% of disabled people have **'walked away'** from inaccessible or unwelcoming businesses, or made a conscious decision not to visit if they believe there are not suitable, clean toilet facilities for them.

Specifications and Product Recommendations

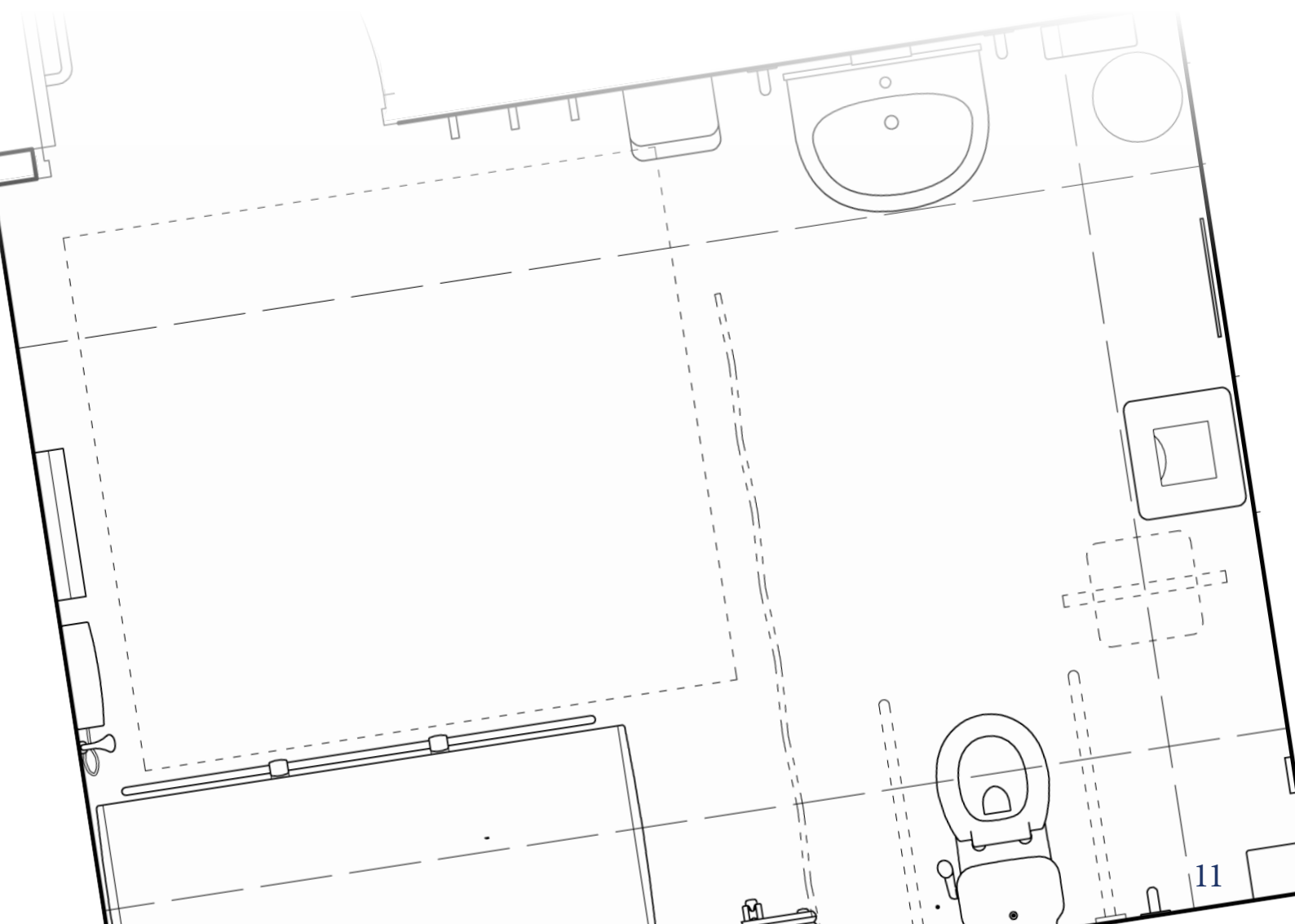




Required equipment:





- | | |
|---|--|
| <p>1 XY (H) System Ceiling Hoist
Provide and install a 3m x 4m XY (H) System with manual traverse and powered lifting/lowering. Fixing method & spur to be agreed with product specialist.</p> <p>2 Height Adjustable Changing Table
Provide and install 1800mm x 700mm height adjustable changing table c/w safety rail. Flush spur required.</p> <p>3 Washbasin
Preferably height adj wash basin with safety cut out so the basin can be lowered to a comfortable height. A standard basin may be fitted if adj not possible.</p> <p>4 Peninsular Toilet
A standard WC with a seat height of 480mm. Must be positioned min of 1000mm away from each wall to allow for carers & self transfer from wheelchair. For full accessibility, closomat wash/dry toilet may be installed.</p> <p>5 Privacy Screen
Wall mounted or mobile. Positioned between the toilet and the rest of the room.</p> <p>6 Wide Paper Dispenser</p> <p>7 Large Waste Disposal Bin</p> | <p>8 Grab rails - recommended</p> <p>9 Coat Hooks - optional</p> <p>10 Full length mirror - optional</p> <p>11 Hand Dryer - recommended</p> <p>12 Paper Towel Dispenser - optional</p> <p>13 Shelf - optional</p> <p>14 Large Sanitary Disposal Unit - optional</p> <p>15 Emergency Alarm Reset Button - optional</p> <p>16 Emergency Alarm Pull Cord - optional</p> <p>17 Shower unit - optional</p> <p>18 Drop down rails - recommended</p> <p>19 12m² size recommended</p> |
|---|--|

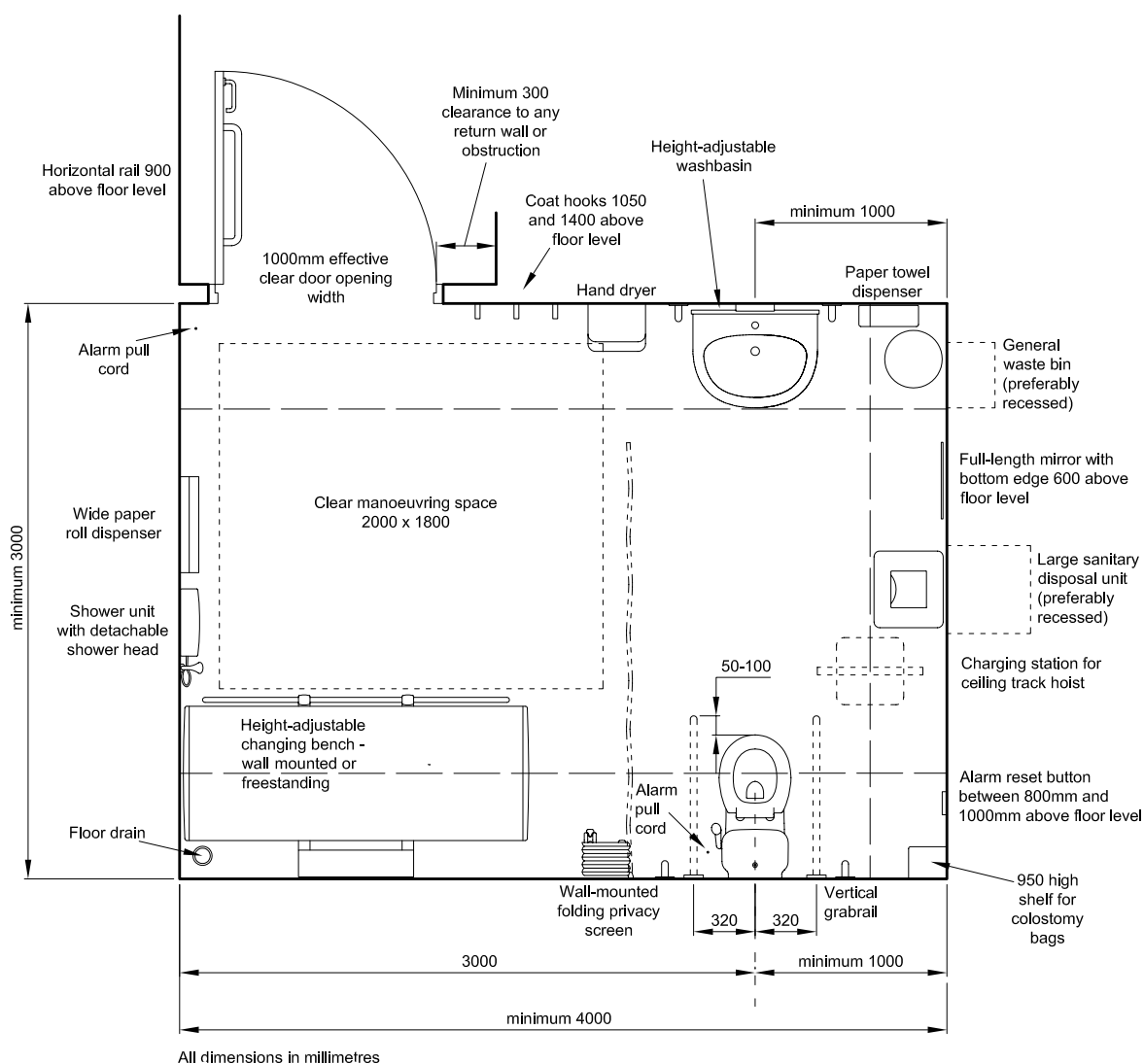
Example Designs and Layout Recommendations



Changing Places Example Designs




STANDARD DESIGN

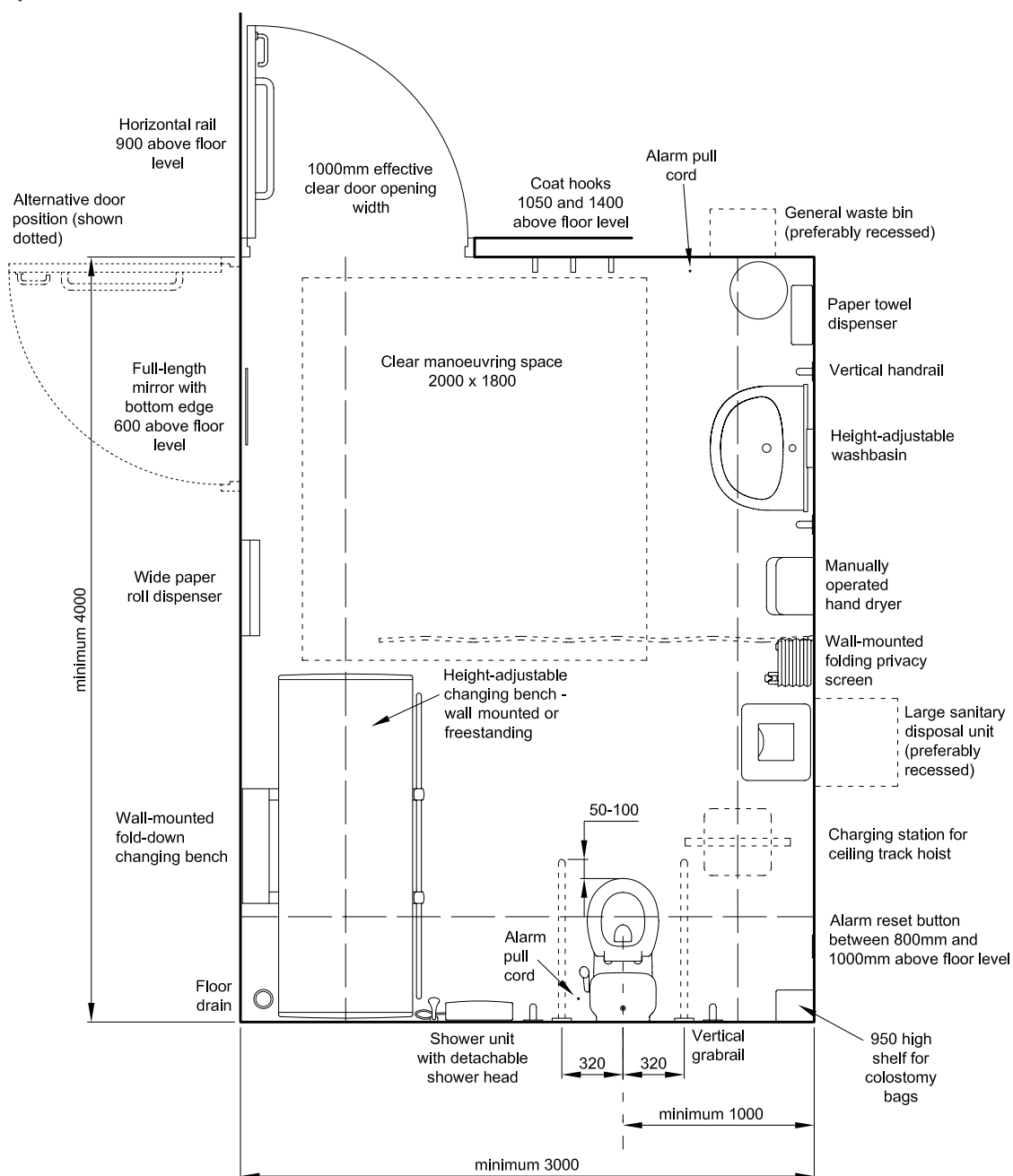
-  Corner door position
-  Layout as per BS8300:2018
-  Layout suitable for Free-standing or Wall Mounted Changing table.
-  Full room covering Ceiling Hoist System



Changing Places Example Designs





ALTERNATIVE DESIGN

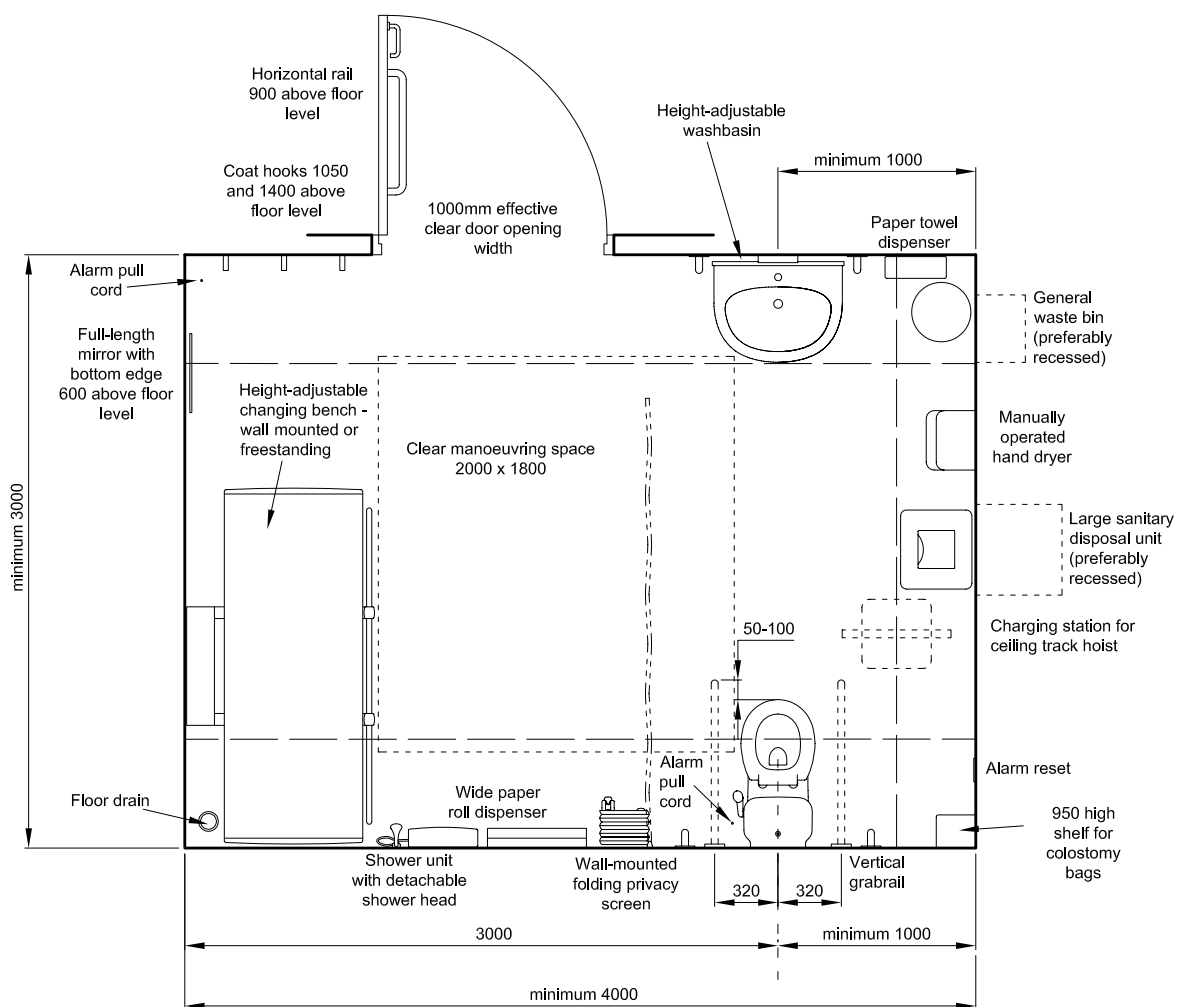
-  Alternative corner door position
-  Layout suitable for Free-standing or Wall Mounted Changing table.
-  Full room covering Ceiling Hoist System



Changing Places Example Designs

CENTRAL DOOR LAYOUT

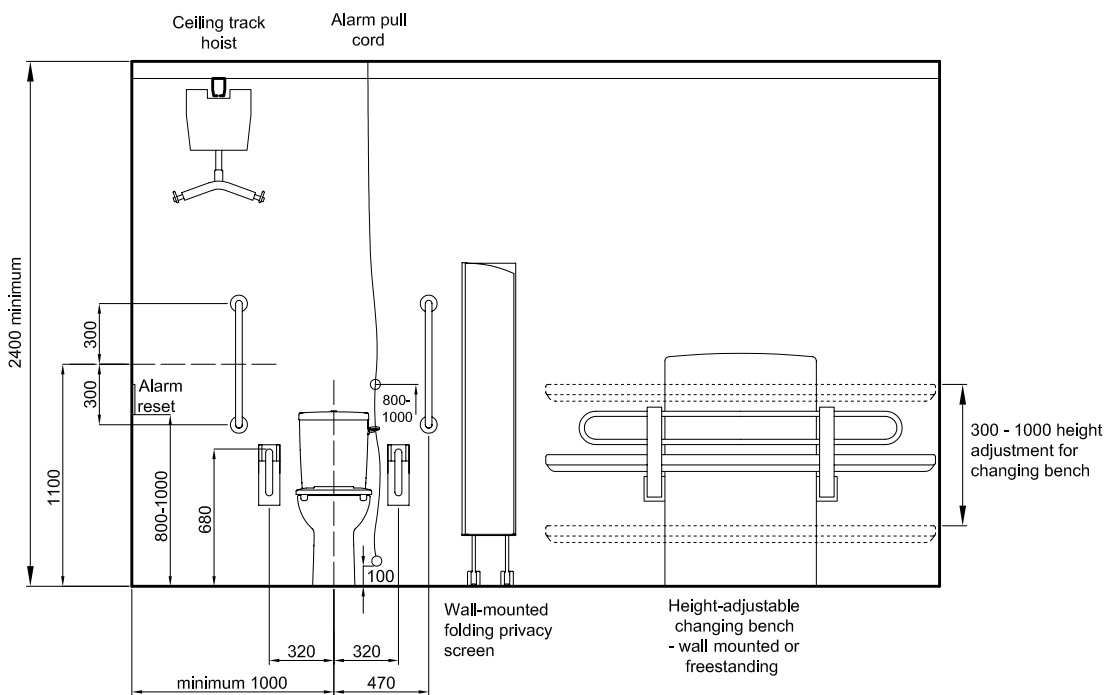
-  Direct Access between door and clear manoeuvring space
-  Shower and floor drain positioned away from door
-  Layout suitable for Free-standing or Wall Mounted Changing table.
-  Full room covering Ceiling Hoist System



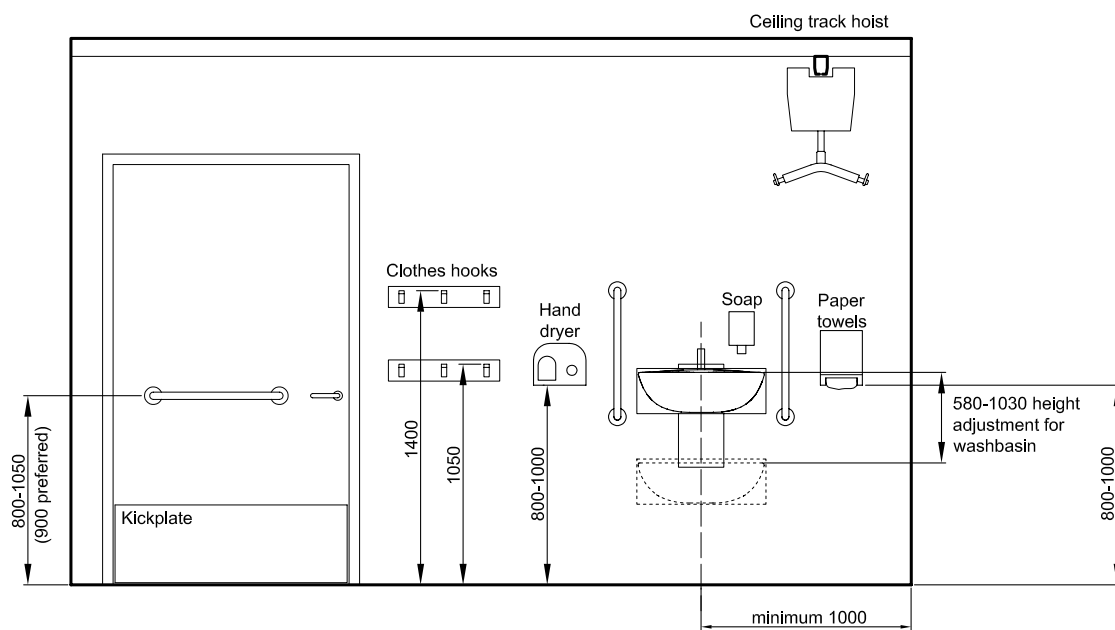
All dimensions in millimetres

Changing Places Example Designs

RECOMMENDED HEIGHTS FOR FITTINGS



Recommended heights for fittings



All dimensions in millimetres

Testimonial

"Thank you #changingplaces thanks to your map we were able to plan our journey to Devon for our holidays. We got up in the very early hours of the morning and leave our son in his onesie knowing we could change him and get him dressed in a much more dignified, clean and less back breaking environment after a good few hours on the road thanks to #Gordanoservices having one of your changing places. Huge thumbs up for a lovely clean open facility, it started our holiday off great."



Katie Punch | Changing Places User and Campaigner



Summary

Along with all the items mentioned within this guide, these are further requirements such as door types, security locks, access and signage among other important areas for consideration so make sure you discuss these with your Changing Places provider.

The specialist Changing Places advisor within the organisation fitting your facility will be able to advise you of the fine details.

To request your hard copy or a pdf of this full guide contact MMS Medical on 021 4618000 or info@mmsmedical.ie



Colchester Zoo
Changing Places Toilet



Sailmakers Shopping Centre
Changing Places Toilet



MMS Medical Ltd
Cork - Dublin - Galway
Head office 021 4618000
www.mmsmedical.ie
info@mmsmedical.ie
sales@mmsmedical.ie

