



# Seating system for kids/youths/adults

*Zitzi*

**DELFI PRO**



*Zitzi*

**SHARKY PRO**





## Dynamical seating principles

### Step 1. Positioning of the pelvis and the legs

An integrated seat pocket helps facilitate activity, postural control, and reduces shear. Other systems using a flat surface leads inevitably to posterior tilt of the user's pelvis. In order to create optimal balance in the pelvis and a good basic position in the seating, one should be able to adjust the leg sections to adduction, and abduction or windswept.



Abduction/Adduction/Windswept

### Step 2. Choosing the right hip belt

4-puntsheupgordels zijn geschikt voor alle gebruikers van onze zitsystemen en wordt gebruikt om het bekken optimaal te positioneren en te fixeren. Er bestaan 4 verschillende maten en de gordels onderscheiden zich door de breedte en lengte van de banden en de polstering van de gordel. Om de juiste heupgordel te kiezen meet u de heupbreedte van de gebruiker.



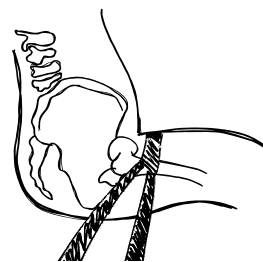
**2-point belt**  
One attachment points on each side



**4-point belt**  
2 attachment points on each side



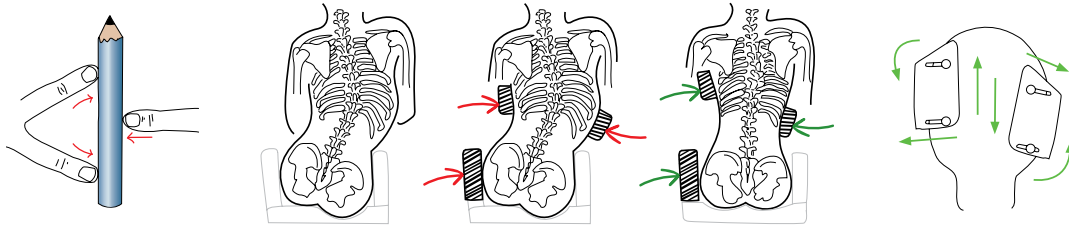
**Anti-rotational belt**  
2 attachment points on each side



Correct pull direction

### Step 3. Positioning of the chest

Adjustable chest supports for better positioning of the body which reduces deformities. Good positioning of the chest leads to better head control and increases the opportunities for activity and alertness. We thus have the opportunity both to correct and maintain the positioning based on the conditions we face.

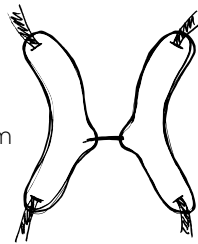


We have two different types of harnesses, Sternum Support and H-strap. The Sternum support and gives a concentrated support over the sternum. The H-strap provides support for both shoulders and torso. It is used when rotation and fits users who need good scolding the torso and shoulders. Is also suitable for users with eg. a button.



#### Sternum support

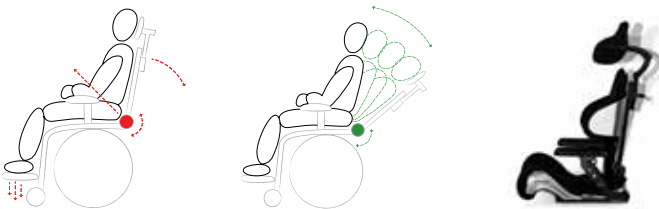
- Concentrated support of the sternum
- Prevent prolapse ascension



#### H-strap

- Prevent rotation effectively
- Suitable for users with eg. a button

### Step 4. Dynamic seat system/Flex-joint



Rigid supports are needed to create a functional, seated position. Dynamic supports offer controlled movement, variation, and dampen the effects of extension spasticity. Delfi Pro comes equipped with a flex-joint to counteract spasticity and offer a dynamic sitting.

### Step 5. Positioning of the head/Example



Active forehead strap



HeadActive



Heads Up



Pro Serie



# Zitzi Delfi Pro/Sharky Pro

Seating system for kids/youths/adults

The seating systems are specifically designed for users with severe sitting problems. Available in 7 sizes and many choices to adapt to a wide audience, including those who are thin and long. The seat grows with the user.

**Delfi Pro** is available in 5 sizes and fits patients from ca. 60 to 170 cm

**Sharky Pro** is available in two sizes fits patients from ca. 150 to 195 cm.

- Big selection of accessories
- The seating system grows with the patient
- Fits both indoor and outdoor chassis
- User friendly
- Crashtested and approved
- No tools needed for adjusting the foot rest, lateral support and arm rest.



All fabrics washable at 60°

**Note!**  
**For high tonus patients, select reinforced back!**



## Zitzi Delfi Pro

Sizes	5
Abduction/Adduction	-9/+18°
Max user height	170 cm
Max user weight	90 kg
Axilla height	17-40 cm
Chest width	14-31 cm
Seat width	24-38 cm
Seat depth	14-45 cm
Hip angle	-12/+26°
Weight ca	13,5 kg (size 2)

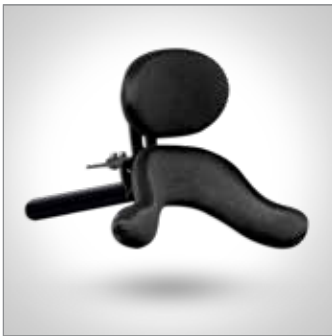


## Zitzi Sharky Pro

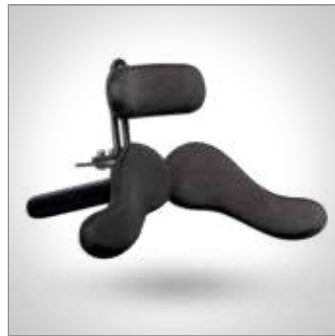
Sizes	2
Abduction/Adduction	-9/+18°
Max user height	150-195 cm
Max user weight	130 kg
Chest width	21-25 cm
Chest depth	27-38 cm
Seat width	36-49 cm
Seat depth	37-55 cm
Hip angle	-10/+25°
Weight ca	24 kg
Crash tested	Approved to 70 kg



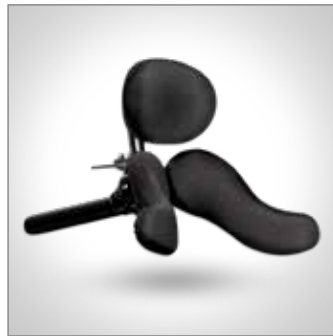
## Accessories Zitzi Delfi Pro



ProSerie lower single



ProSerie Junior



ProSerie Adult



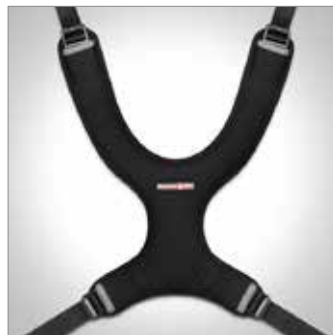
ProSerie Mini



ProSerie Plush



Standard headrest



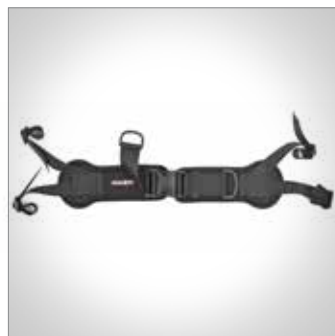
Sternum support Pro



H-strap Pro



Anti-rotational belt



Sittbelt



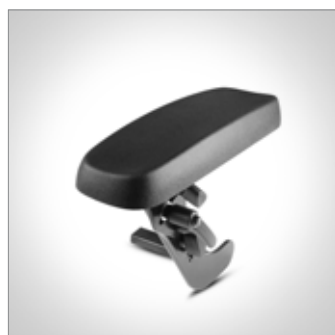
Table



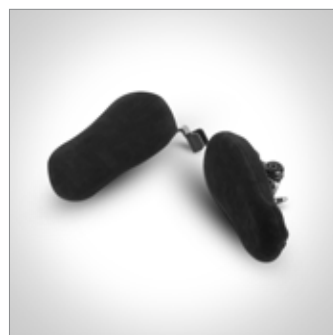
Support table



Upper arm support



Armrest



Pelvic support



Hip support

## Accessories Zitzi Delfi Pro



Footrest



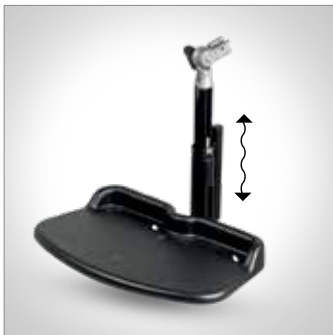
Footrest divided



Footrest adjustable



Footrest divided adjustable



Footrest flex



Cushion footrest



Calf support



Footrest high-edge



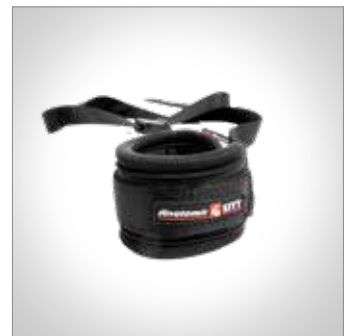
Cushion calf support



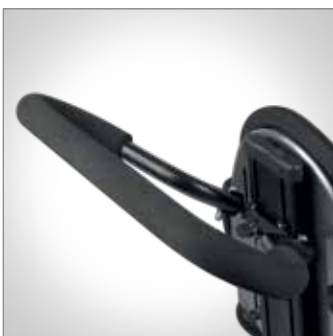
Ankle holder



Footstrap



Armband



Driving bow



Adapter plate



Mounting plate



Play bow

## Accessories Zitzi Sharky Pro



Sternumsupport Pro



H-strap Pro



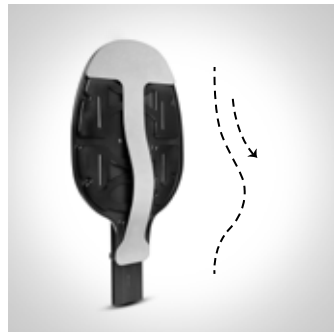
Anti-rotational belt



Sittbelt



Adjustable back



Integrated lumbar support



Armrest from seat



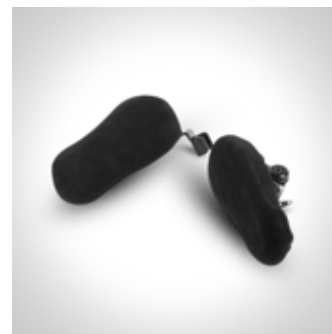
Armrest from back



Foldable armrests



Upper arm support



Pelvic support



Footrest



Footrest whole, adjustable



Calf Support



Grey lining



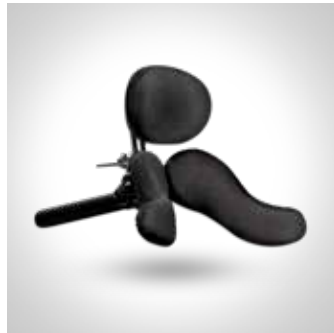
Alcantara lining



## Accessories Zitzi Sharky Pro



Headrest standard



Pro Serie Adult



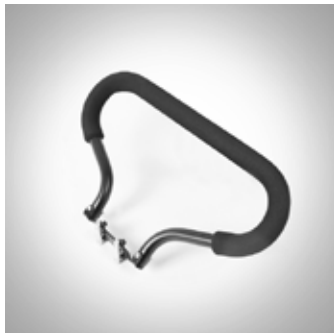
Pro Serie Plush



Pro Serie Mini



Forehead strap



Driving bow



Sun cover



Adapter system



Table



Table, foldable



Table, reinforced



Foot strap



Hip support



Rain cover



Armrest plate special



Cushion (footrest)

# Chair/chassi guide

## Delfi Pro

### What size of chair shall I choose?

**Size 0** - ca. 14-20 cm seat depth / height ca. 60-80 cm

**Size 1** - ca. 17-27 cm seat depth / height ca. 70-100 cm

**Size 2** - ca. 23-33 cm seat depth / height ca. 90-130 cm

**Size 3** - ca. 30-40 cm seat depth / height ca. 120-160 cm

**Size 4** - ca. 35-45 cm seat depth / height ca. 140-170 cm

### What size of chassi shall I choose?

**Size 0** - Flipper Pro size 1 / Guppy size 1

**Size 1** - Flipper Pro size 1 / Guppy size 1

**Size 2** - Flipper Pro size 2 / Guppy size 1

**Size 3** - Flipper Pro size 3 / Guppy size 1

**Size 4** - Flipper Pro size 3 / Guppy size 2 / Seabass size 1

## Sharky Pro

### What size of chair shall I choose?

**Size 1** - ca. 45-55 cm seat depth / height ca. 150-180 cm

**Size 2** - ca. 50-60 cm seat depth / height ca. 170-195 cm

### What size of chassi shall I choose?

**Size 1** - Flipper Pro size 3 / Seabass size 2

**Size 2** - Flipper Pro size 3 / Seabass size 3

## Fitting chassis



### Zitzi **PENGY**

Zitzi Pengy has a built-in dynamic suspension system that allows it to roll smoothly on uneven surfaces. Zitzi Pengy folds through a simple manipulation system and stays in its folded position automatically. It is crash tested and approved and can be equipped with terrain wheels which is great during the winter or for walks in the forest.

<b>Sizes</b>	1
<b>Crashtested</b>	Approved
<b>Colour</b>	Black
<b>Weight</b>	12 kg
<b>Load weight</b>	50 kg
<b>Tilt</b>	-23° to +40°
<b>Seat height</b>	54 cm
<b>Wheels</b>	7", 12"



### **ZITZI GUPPY**

Zitzi Guppy is a small and easy-to-handle chassis. Zitzi Guppy is designed to fit most seating systems on the market and has many different wheels to many needs.

<b>Sizes</b>	2
<b>Wheels</b>	16", 20", 22", 24"
<b>Load weight</b>	70 kg
<b>Tilt</b>	0-32°
<b>Seat height</b>	46 cm
<b>Colour</b>	Black
<b>Weight</b>	14 kg
<b>Crashtested</b>	Approved



### Zitzi **SEABASS PRO**

Seabass Pro with its center of gravity on the right place. Versatile wheel location for a huge variety and wheel sizes. Whatever seating solution chosen this guarantees perfect balance for every fitting.

<b>Sizes</b>	3
<b>Wheels</b>	12", 16", 20", 22", 24"
<b>Load weight</b>	135 kg
<b>Tilt</b>	35°
<b>Seat height</b>	41/46 cm
<b>Colour</b>	Black
<b>Weight</b>	20 kg
<b>Crashtested</b>	Approved



### Zitzi **FLIPPER PRO FLEX**

Unique for Zitzi Flipper Pro Flex is its tilt in space feature, allowing the seat to be tilted without compromising the balance and stability between the seat and underframe.

<b>Sizes</b>	1
<b>Editions</b>	2
<b>Load weight</b>	75 kg
<b>Tilt</b>	30°
<b>Height adjustment</b>	29-65 cm*
<b>Total width</b>	63 cm
<b>Total length</b>	81 cm
<b>Weight</b>	31 kg
<b>Crashtested</b>	Approved

\* The dimensions above indicates the base height and change according to the seating system you choose



### Zitzi **FLIPPER PRO**

The chassis is equipped with 125 mm wheels for easy rolling over carpet edges, thresholds and other obstacles. There are two options to choose between for the lift feature. The electric motor is suitable for lifting larger weight effortlessly while the manual hydraulic lift is a hassle-free solution that doesn't require access to an electrical outlet for charging.

<b>Sizes</b>	3
<b>Editions</b>	6
<b>Load weight</b>	75 kg
<b>Tilt</b>	30°
<b>Height adjustable</b>	Yes
<b>Seat height (min)</b>	21 cm*
<b>Seat height (max)</b>	61 cm*
<b>Wheels, standard</b>	125 mm

\* The dimensions above indicates the base height and change according to the seating system you choose



[www.anatomicsitt.com](http://www.anatomicsitt.com)



MMS Medical,  
51 Eastgate Drive,  
Little Island,  
Cork

Tel: 021 4618000

Email: [info@mmsmedical.ie](mailto:info@mmsmedical.ie)

[www.mmsmedical.ie](http://www.mmsmedical.ie)